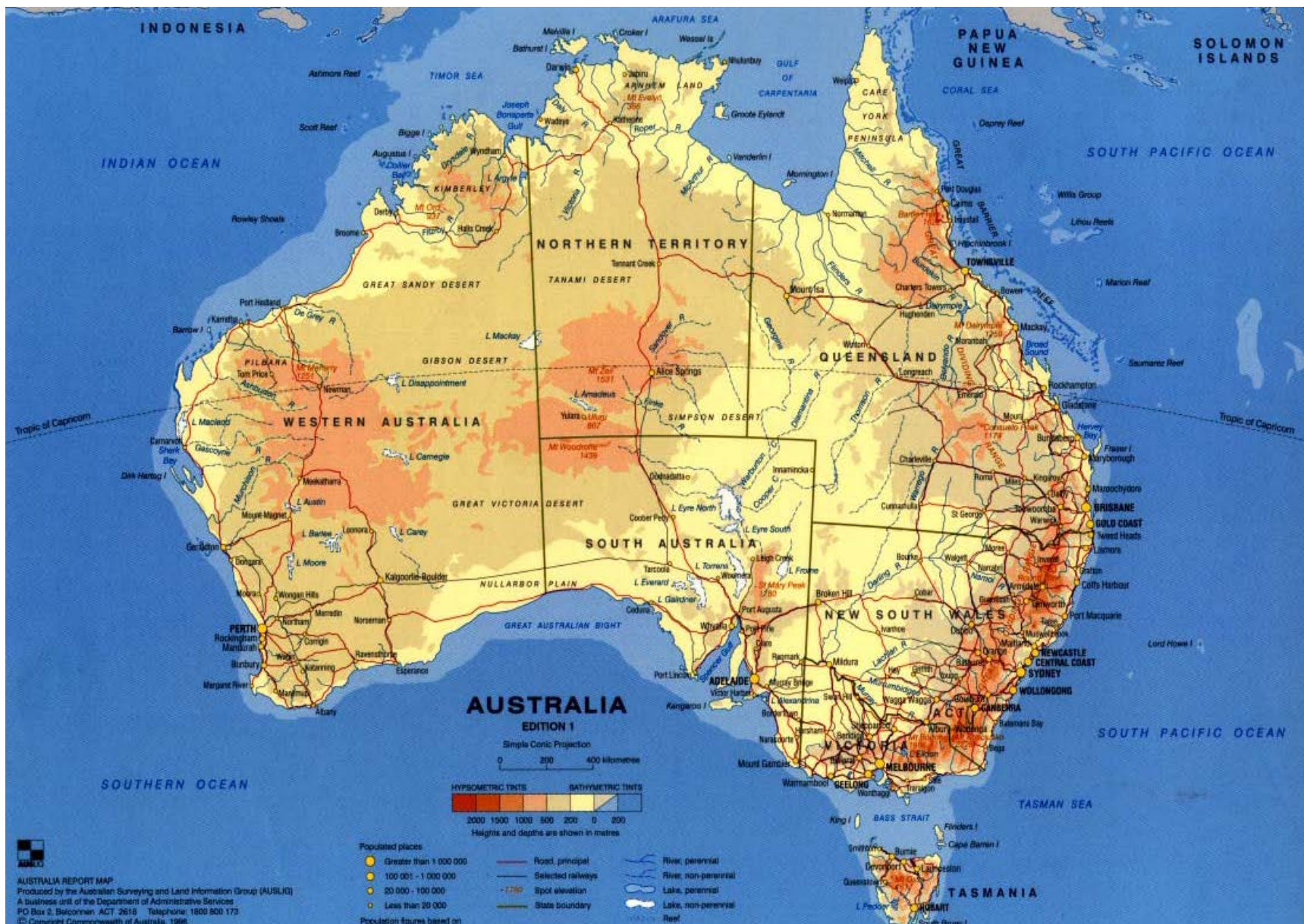


Designing an implementation strategy to support the multi-site implementation of an evidence informed, culturally appropriate Practice Model for Intensive Family Support Services across the NT, Australia

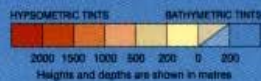
Parenting Research Centre

- non-profit, independent research, program development, implementation support and evaluation organisation
- support the use of evidence in practice and participatory program development and evaluation
- use evidence from the science and practice of implementation to support effective and full implementation of quality services for children and families
- Leading a territory wide, scale up and evaluation of an evidence based, culturally appropriate Intensive Family Support service
- leading large-scale national capacity building initiatives focusing on improved services and practice for vulnerable families (e.g., Healthy Start)



AUSTRALIA
EDITION 1

Simple Conic Projection
0 200 400 kilometres



Populated places

- Greater than 1 000 000
 - 100 001 - 1 000 000
 - 20 000 - 100 000
 - Less than 20 000
- Population figures based on

- Road, principal
- Selected railways
- 720 Spot elevation
- State boundary

- River, perennial
- River, non-perennial
- Lake, perennial
- Lake, non-perennial
- Reef



AUSTRALIA REPORT MAP
Produced by the Australian Surveying and Land Information Group (AUSLIG)
A business unit of the Department of Administrative Services
PO Box 2, Belconnen ACT 2618 Telephone: 1800 800 173
© Copyright Commonwealth of Australia, 1986

IFSS Partnership: IFSS Service Sites

Save the Children, NT

Good Beginnings, NT

The Ngaanyatjarra Pitjantjatjara Yankunytjatjara Women's
Council (NPY)

Central Australian Aboriginal Congress

Anyinginyi Health Service

IFSS Partnership: IFSS Implementation and Evaluation Team

Robyn Mildon

Vince Lagioia

Fiona Arney

Cheryl Majka

Aron Shlonsky

Faye Parriman

Fabrizio D'Esposito

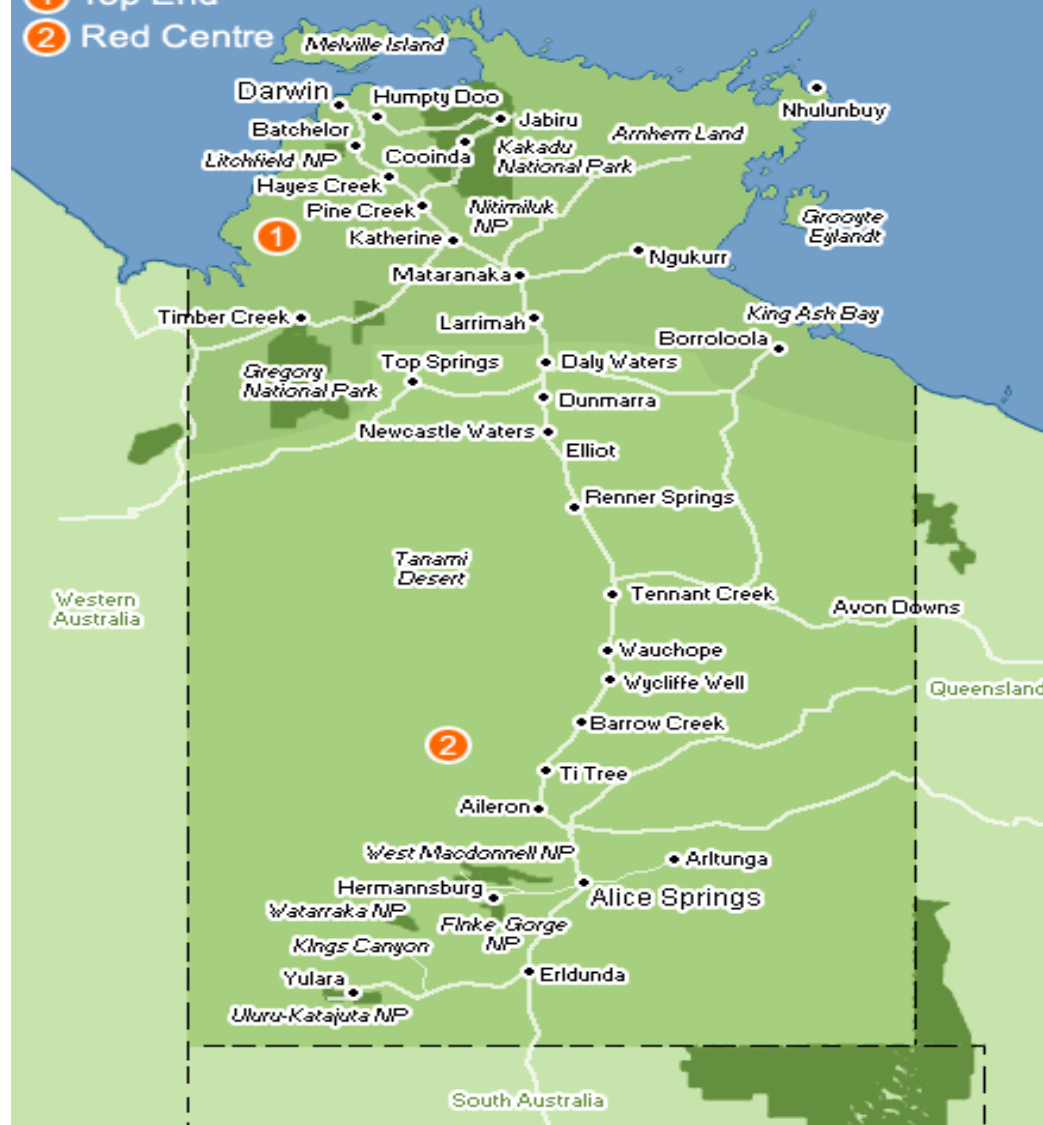
Toni Woods

Rhiannon McKenzie

Northern Territory

① Top End

② Red Centre





Extreme Implementation

The get the most out of what we have..

What:

Evidence based and/or promising programs and practices

How:

Effective implementation frameworks (e.g. strategies to change and maintain behaviour of practitioners and create hospitable organisational systems)

Context within which the programs and practice will be delivered

The what:

Intensive Family Support Service

- Community and home-based support
- Delivered by range of NGOs well established working on those communities
- For families with children aged 0 to 12 who are at experiencing or at risk of experiencing neglect and are on CP Income Mgt
- Aims to help families develop skills and access supports they need to promote safety, health and wellbeing of their children

- Growth in funding and delivery of intensive family support services for vulnerable families.
- Few agencies use evidence-informed intensive family support practice models consistently with a service
- Effective and full implementation rarely reached or sustained
- Little evaluation done is done on any large-scale

Community or Town	YEAR 12 or equivalent				Unemployment				<\$1000 per week	
	Indigenous		Non-Indigenous		Indigenous		Non-Indigenous		Household with Indigenous person(s) (%)	Other Household (%)
	Male (%)	Female (%)	Male (%)	Female (%)	Male (%)	Female (%)	Male (%)	Female (%)		
Wadeye	30.1	33.3	53.7	54.2	32.0	30.0	3.5	0.0	64.6	18.3
Palmerston	30.1	33.3	53.7	54.2	11.2	10.8	2.8	3.3	33.3	17.6
Humpty Doo	21.4	31.6	32.1	47.8	9.8	5.2	3.9	2.9	20.9	22.3
Darwin River	11.6	17.1	27.0	38.6	12.5	12.0	4.0	5.7	38.7	30.5
Darwin	22.9	27.1	55.3	61.9	15.5	9.9	3.3	2.9	33.1	20.2
Bagot	4.8	4.0	n/a	n/a	66.7	70.0	n/a	n/a	74.4	n/a
K&G	18.8	8.6	47.4	65.6	0.0	100.0	2.4	3.8	60.0	14.6
Alice Springs	14.0	16.7	50.6	60.7	15.7	8.9	2.4	1.8	37.6	19.7
Katherine	13.6	13.8	44.7	54.1	28.4	24.1	2.3	2.5	42.5	22.0
Mataranka	17.1	0.0	23.3	47.0	0.0	0.0	0.0	0.0	0.0	32.3
Barunga	12.0	21.7	100.0	100.0	39.5	34.1	0.0	0.0	47.2	25.0
Amata	3.8	3.9	44.4	100.0	10.4	0.0	0.0	0.0	42.9	18.8
Ernabella	8.2	11.0	50.0	65.5	34.5	28.6	0.0	0.0	26.7	0.0
Indulkana	5.3	6.8	30.0	51.5	13.2	20.0	13.0	0.0	40.8	60.7
Finke	6.5	5.8	n/a	100.0	31.8	25.0	0.0	0.0	62.5	0.0
Australia	49.2				3.2				27.2	

IFSS Partnership: IFSS Service Sites

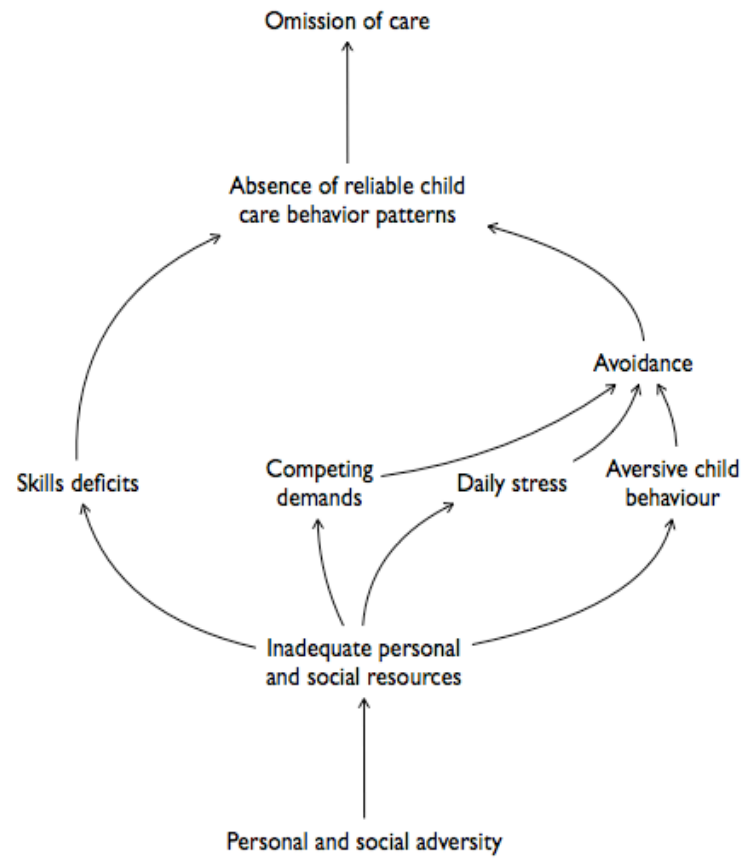
Save the Children, NT

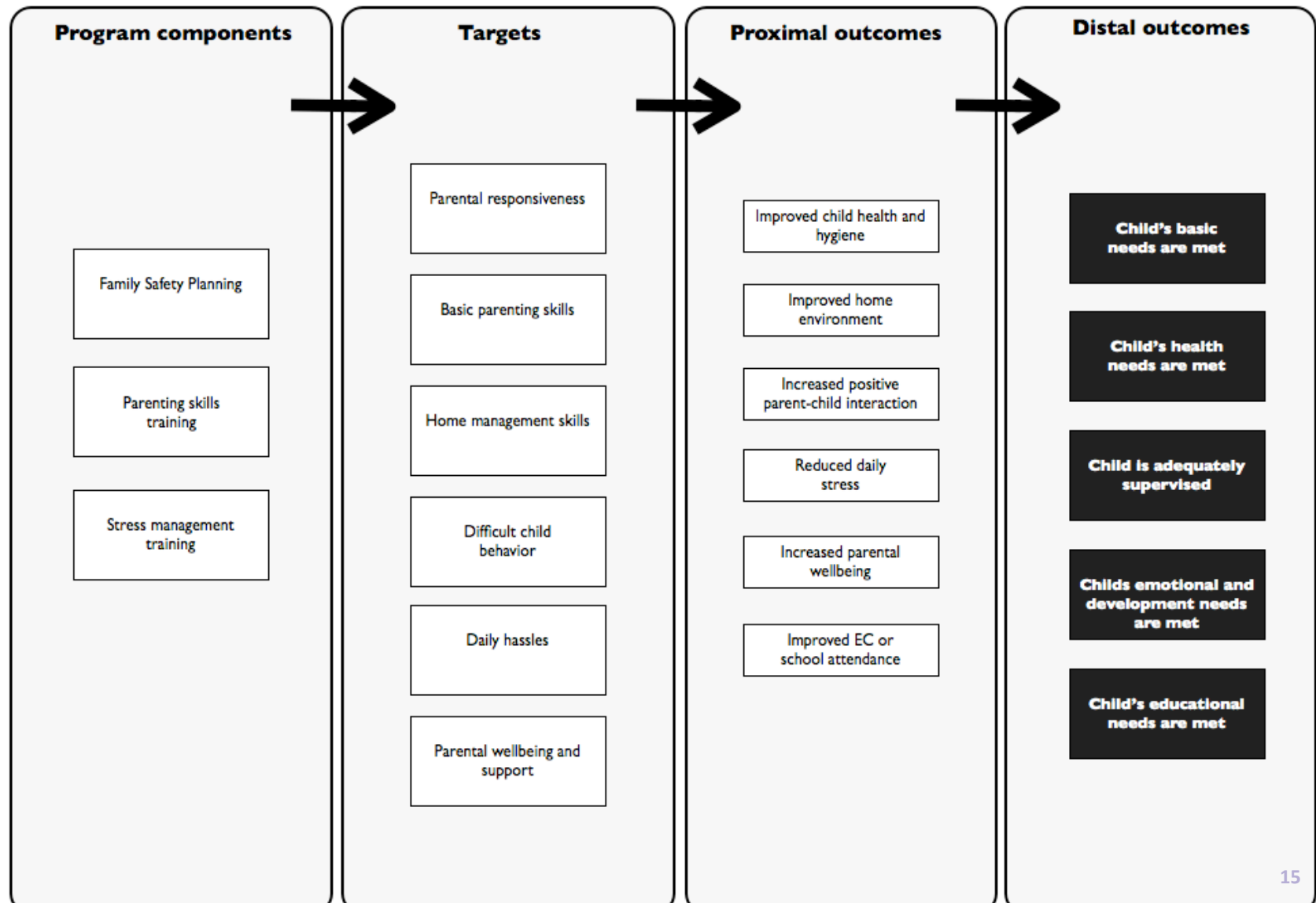
Good Beginnings, NT

The Ngaanyatjarra Pitjantjatjara Yankunytjatjara Women's Council (NPY)

Central Australian Aboriginal Congress

Anyinginyi Health Service





IFSS Implementation Support Team

Collaborative development and ongoing tailoring of an outcomes focused, evidence informed and culturally appropriate appropriate Practice Model

Support for staff selection

Training plus coaching model

Development of a system and support to use a data based decision making system

Facilitation of implementation team structure

Quality Implementation Framework (Meyers, Durlak and Wandersman, 2012)

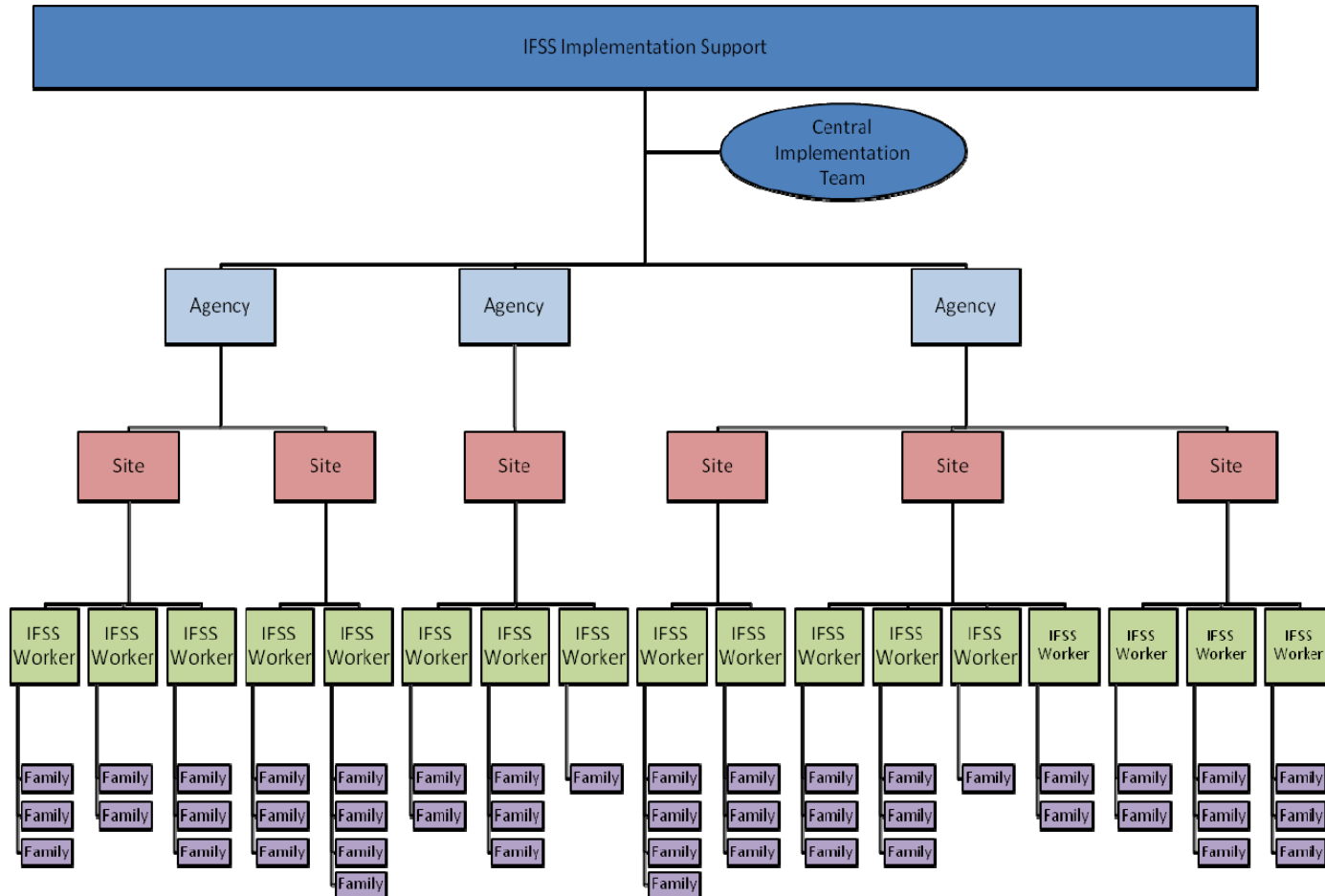
National Implementation Research Network (Fixsen, Naoom, Blase, Friedman & Wallace, 2005)

Knowledge to Implementation Cycle

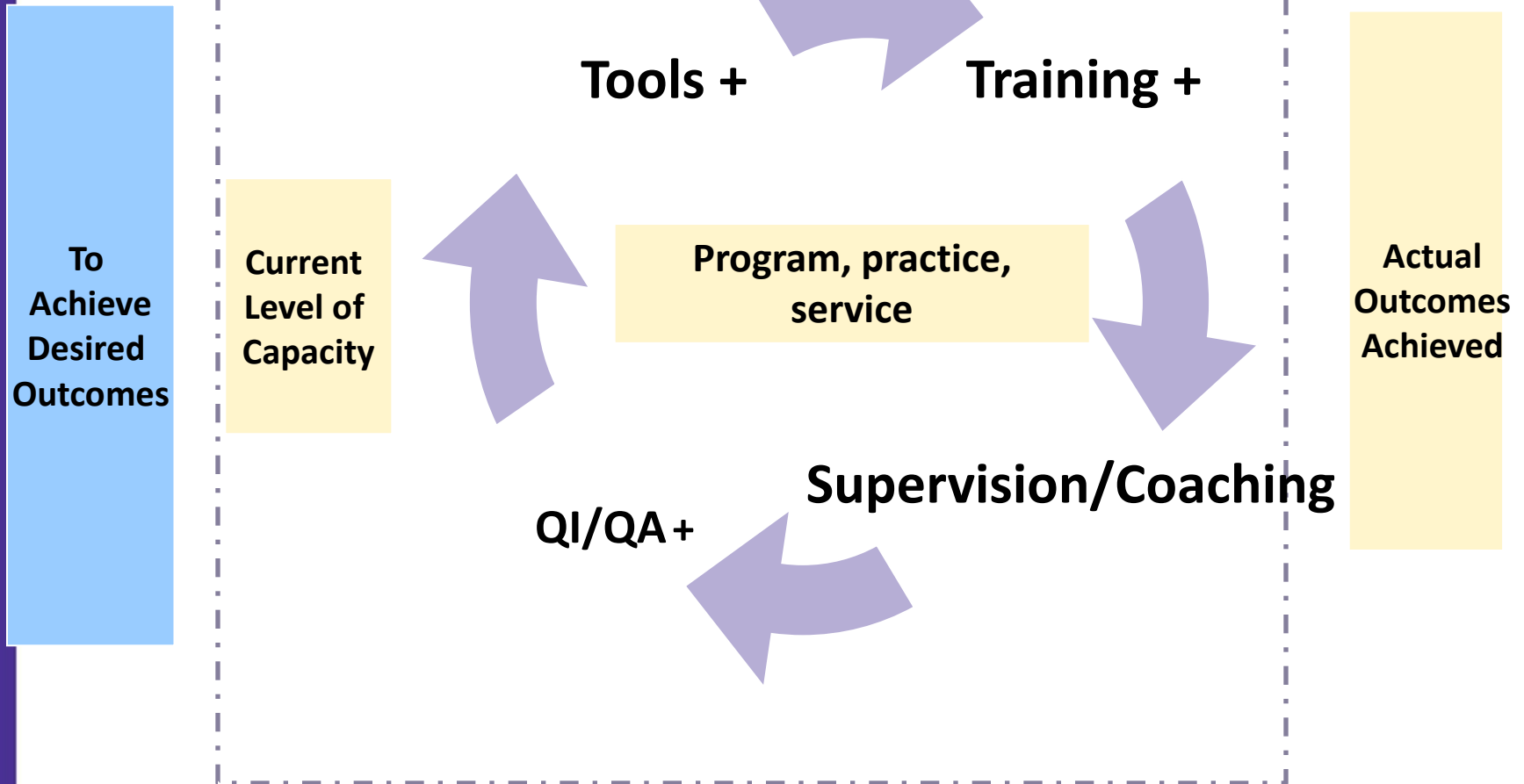
(based on Fixsen et al 2005)



Settling a system



TOWARD AN EVIDENCE BASED SYSTEM FOR IMPLEMENTATION OF IFSS



What are we trying to find out

What is the social validity of the Practice Model and Service for practitioners and families?

To what extent is the model implemented with high fidelity (adherence, dose and quality)?

What are moderators impact the implementation of the model and service?

What is the clinical impact of the Practice Model as it is implemented?

Potential moderators:

Participant characteristics (complexity of cases, responsiveness, family obligations/mobility, caregiver depression, age etc, characteristics of the neglect – type of neglect and reasons for neglect)

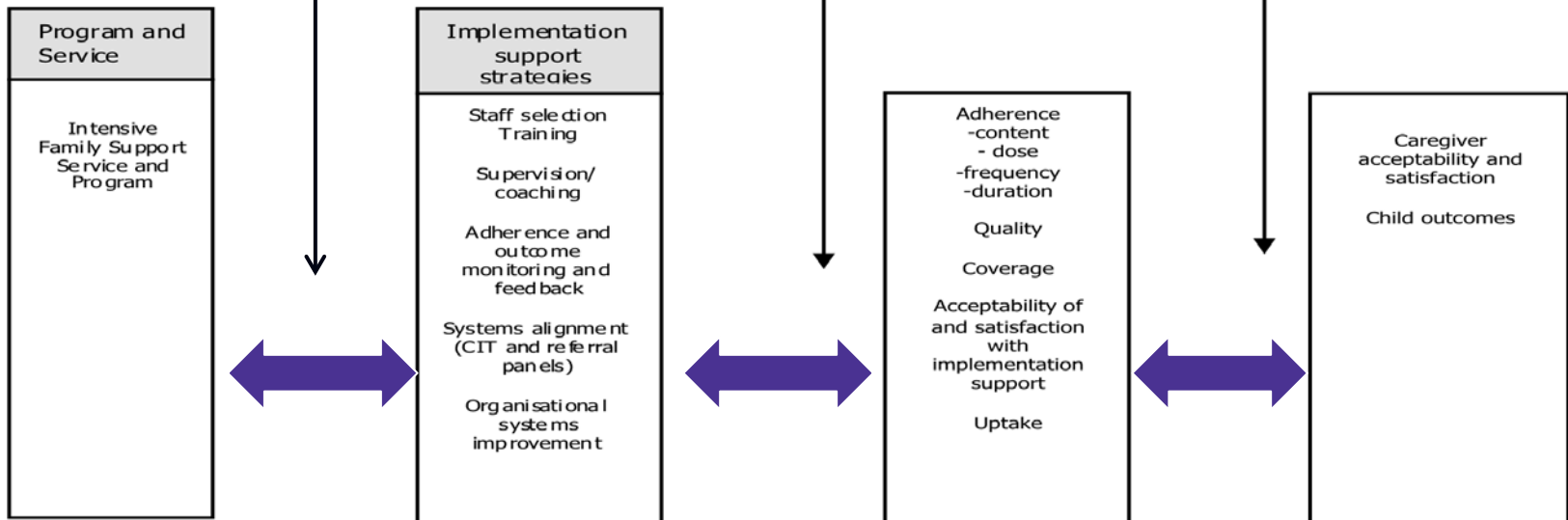
Social significance of goals, appropriateness of procedures and importance of outcomes (social validity)

Organisational context (receptivity, size, turnover, professional characteristics, organisational culture, leadership, readiness for change, community controlled sector, attitudes towards DCF, access to vehicles for staff, number of employees who are local, usual focus of service delivery e.g., adults/children/community, recruitment processes)

Community context (number of language groups in the community, pragmatic barriers – distance/climate, sorry business in community, size of the community, Growth Town/RSD status/prescribed community, attitudes toward DCF/FaHCSIA, availability of housing/food security/recreation/transportation, quality of school, other services received by clients/available to them)

Broader Context (socio-political, funding, legislation, interorganisational networks, DCF referrals)

Individual provider characteristics (demographics including gender, cultural background, language skills, skills/experience, values, goals, readiness for evidence based practice, attitudes towards DCF)



Fidelity Framework

Based on .. Daro, Hart, Boller M.C. & Bradley (2012).

Structural Fidelity

- service referrals
- staff qualifications and training
- worker caseloads
- supervision caseloads
- supervision levels
- family enrollment and duration
- service dosage
- visit planning

Fidelity Framework

Dynamic fidelity

- shared understanding of purpose of service
- shared approach and goals
- focus goals and care for children
- positive and building on strengths
- use of performance based teaching strategies
- cultural competence
- focus on outcomes



Contact Us

Level 5, 232 Victoria Parade East Melbourne, Victoria, Australia 3002

E: info@parentingrc.org.au

P: +61 3 8660 3500

F: +61 3 8660 3599